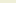
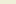
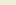



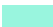




LEGEND

- 564,500
- ✕ Milne Inlet Tote Road Km Marking
 - Milne Inlet Tote Road
 - Undisturbed 50 m Buffer From Commercial Lease Boundary
 - Commercial Lease Boundary
 - Project Development Area
 - Ultimate Waste Rock Stockpile
 - Ultimate Pit Outline

Disturbance Type	Frequency	Severity	Impact on Ecosystem	Recovery Time
Wildfires	High	High	Significant	Long
Storms	Medium	Medium	Significant	Medium
Droughts	Low	Low	Significant	Long
Invasive Species	Medium	Medium	Significant	Medium
Pollution	Low	Low	Significant	Long
Human Activity	High	High	Significant	Long

-  General Disturbed Area
 Quarry Area
 Disturbed Area With Liner

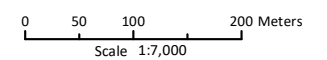
Proposed Disturbance Type

-  Proposed Disturbed Area Carried over from 2022 & Prior - Security in Place
-  Proposed Disturbed Area - Scope of Work for 2023
-  Proposed Disturbed Area - Scope of Work for 2024
-  Proposed Disturbed Area With Liner Carried over from 2022 & Prior - Security in Place
-  Proposed Disturbed Area With Liner - Scope of Work for 2023
-  Proposed Disturbed Area With Liner - Scope of Work for 2024

မင်းသိန်း	MARY RIVER PROJECT
-----------	--------------------

**2023 Mine Site Disturbance Area
(Sheet 4 of 7)**

Projection: NAD 1983 UTM ZONE 17N.
Base Map: © 2023 Digital Globe, Inc.
Imagery and Infrastructure are representative
as of July 2023.



FIGURE

1-6



SAVED: C:\Users\skatie.mcguire\Documents\4 - Mega\Reporting\4 - Disturbed Land\2023\BIM_FI-10 Northern_Corridor_S1_2023.mxd; 20-Nov-23

LEGEND

- ✕ Milne Inlet Tote Road Km Marking
- Milne Inlet Tote Road
- Project Development Area
- Undisturbed 50 m Buffer From Commercial Lease Boundary
- Commercial Lease Boundary

Disturbance Type

- General Disturbed Area
- Historic Borrow Area KM 97

ᑭᓄᓂᓂ ᐃᑭᑦᑭᑦᑭᑦᑭᑦ MARY RIVER PROJECT

Tote Road 2023 Disturbance Area
(Sheet 1 of 25)

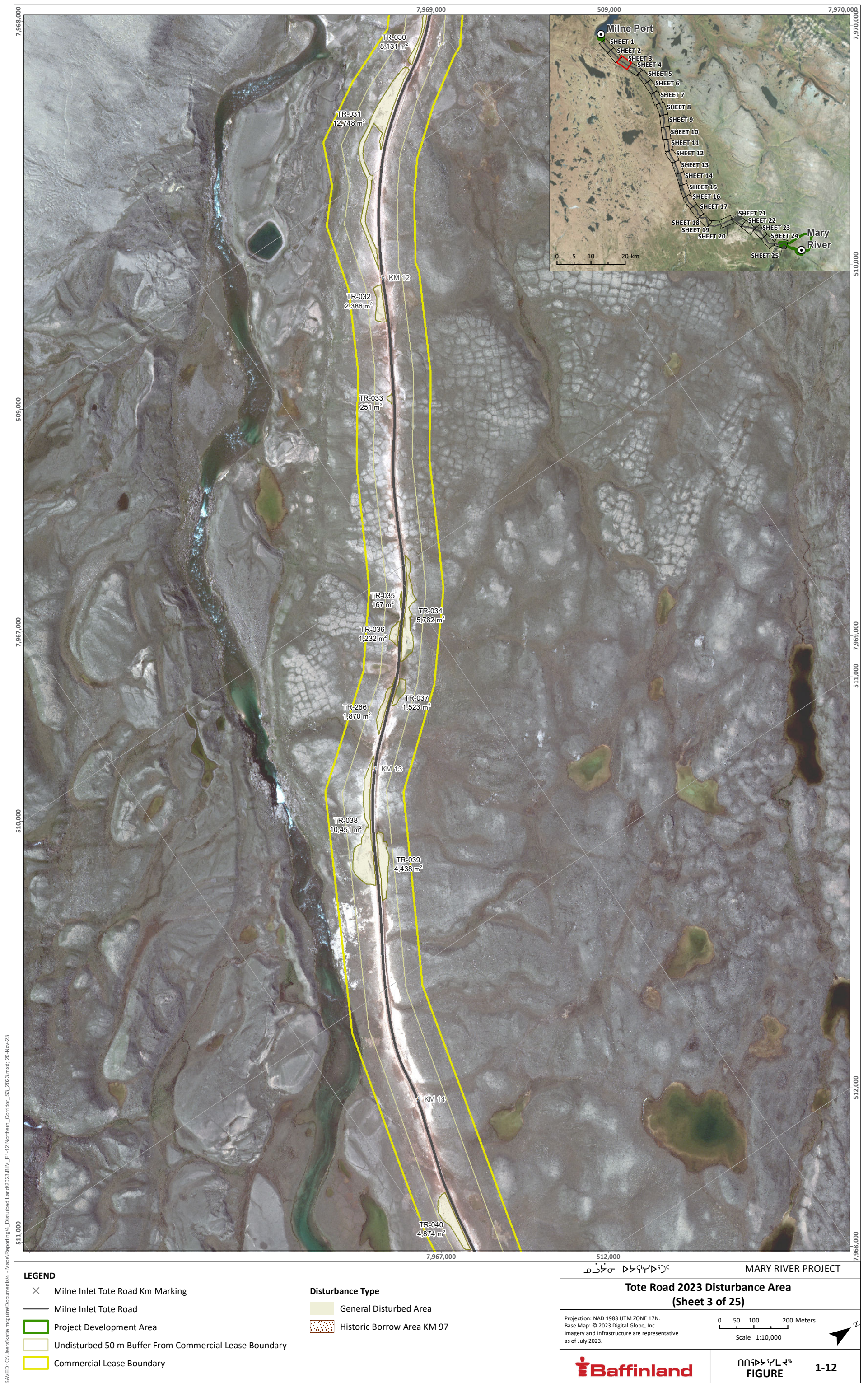
Projection: NAD 1983 UTM ZONE 17N.
Base Map: © 2023 Digital Globe, Inc.
Imagery and Infrastructure are representative
as of July 2023.

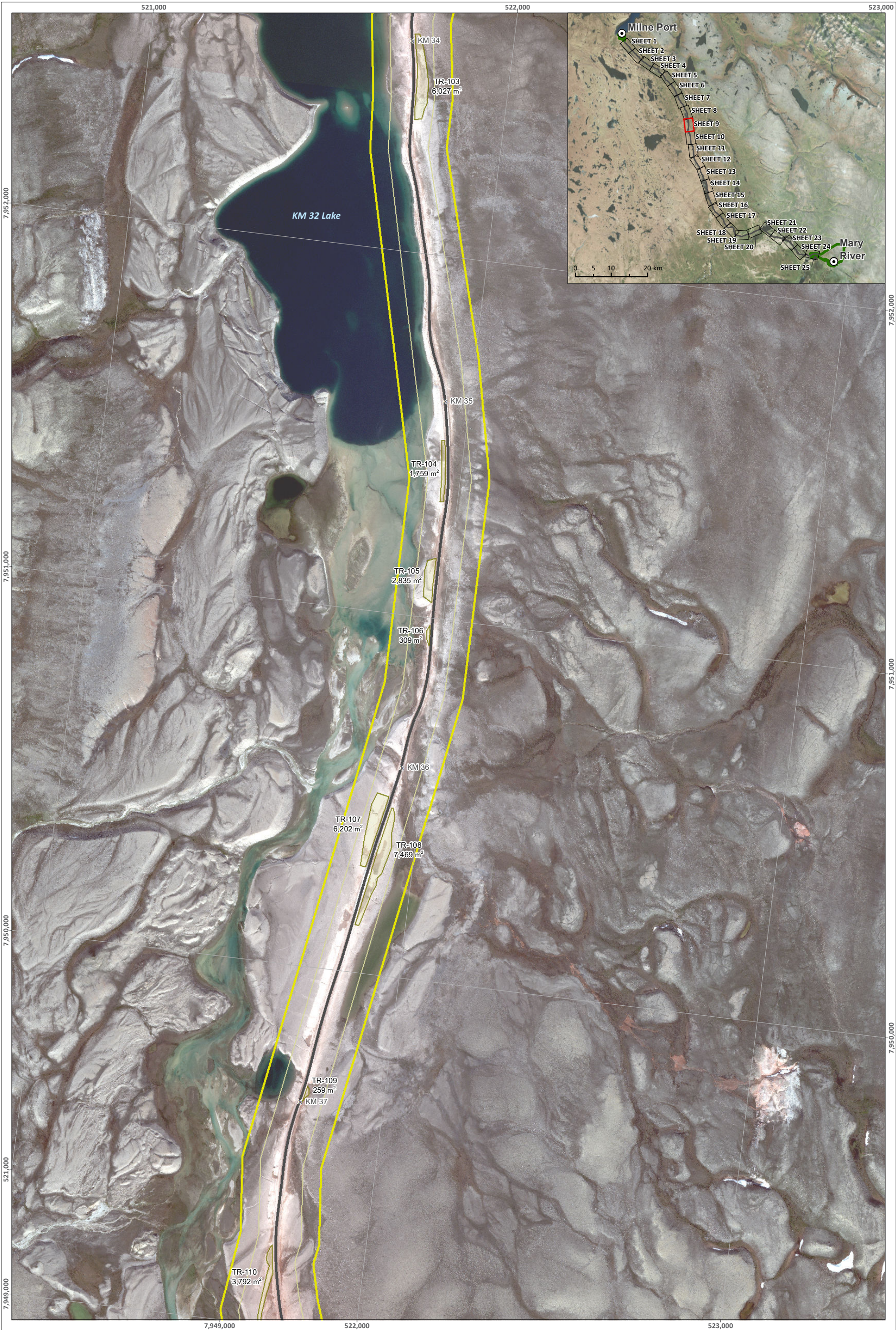
0 50 100 200 Meters
Scale 1:10,000



ᑭᓄᓂᓂ ᐃᑭᑦᑭᑦᑭᑦᑭᑦ
FIGURE

1-10





LEGEND

- Milne Inlet Tote Road Km Marking
- Milne Inlet Tote Road
- Project Development Area
- Undisturbed 50 m Buffer From Commercial Lease Boundary
- Commercial Lease Boundary

Disturbance Type

- General Disturbed Area
- Historic Borrow Area KM 97

ᑭᓄᓂ ᐃᑭᑦᑭᑦᑭᑦ

MARY RIVER PROJECT

Tote Road 2023 Disturbance Area
(Sheet 9 of 25)

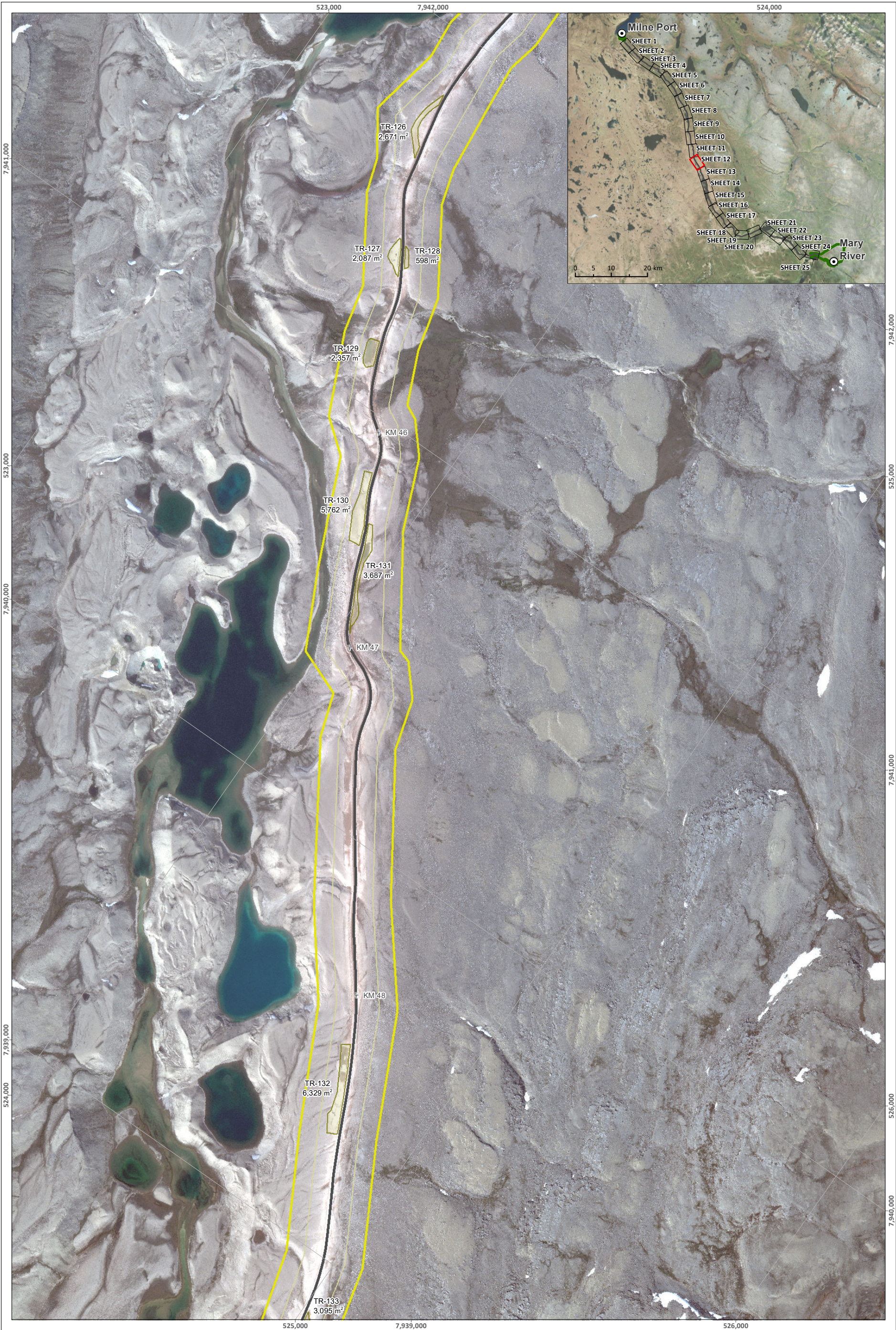
Projection: NAD 1983 UTM ZONE 17N.
Base Map: © 2023 Digital Globe, Inc.
Imagery and Infrastructure are representative
as of July 2023.

0 50 100 200 Meters
Scale 1:10,000



ᑭᓄᓂ ᐃᑭᑦᑭᑦᑭᑦ
FIGURE

1-18



LEGEND

- ✕ Milne Inlet Tote Road Km Marking
- Milne Inlet Tote Road
- Project Development Area
- Undisturbed 50 m Buffer From Commercial Lease Boundary
- Commercial Lease Boundary

Disturbance Type

- General Disturbed Area
- Historic Borrow Area KM 97

ᑭᓄᓐ ᑲᓐᓇᓐᓇᓐ MARY RIVER PROJECT

Tote Road 2023 Disturbance Area
(Sheet 12 of 25)

Projection: NAD 1983 UTM ZONE 17N.
Base Map: © 2023 Digital Globe, Inc.
Imagery and Infrastructure are representative
as of July 2023.

0 50 100 200 Meters
Scale 1:10,000



ᑭᓄᓐ ᑲᓐᓇᓐᓇᓐ
FIGURE

1-21



LEGEND

- ×

 Milne Inlet Tote Road Km Marking
- Milne Inlet Tote Road
- Project Development Area
- Undisturbed 50 m Buffer From Commercial Lease Boundary
- Commercial Lease Boundary
- Disturbance Type

General Disturbed Area

Historic Borrow Area KM 97

ᑭᓄᓂᑦ ᑯᓄᓂᑦ ᑯᓄᓂᑦ MARY RIVER PROJECT

Tote Road 2023 Disturbance Area
(Sheet 16 of 25)

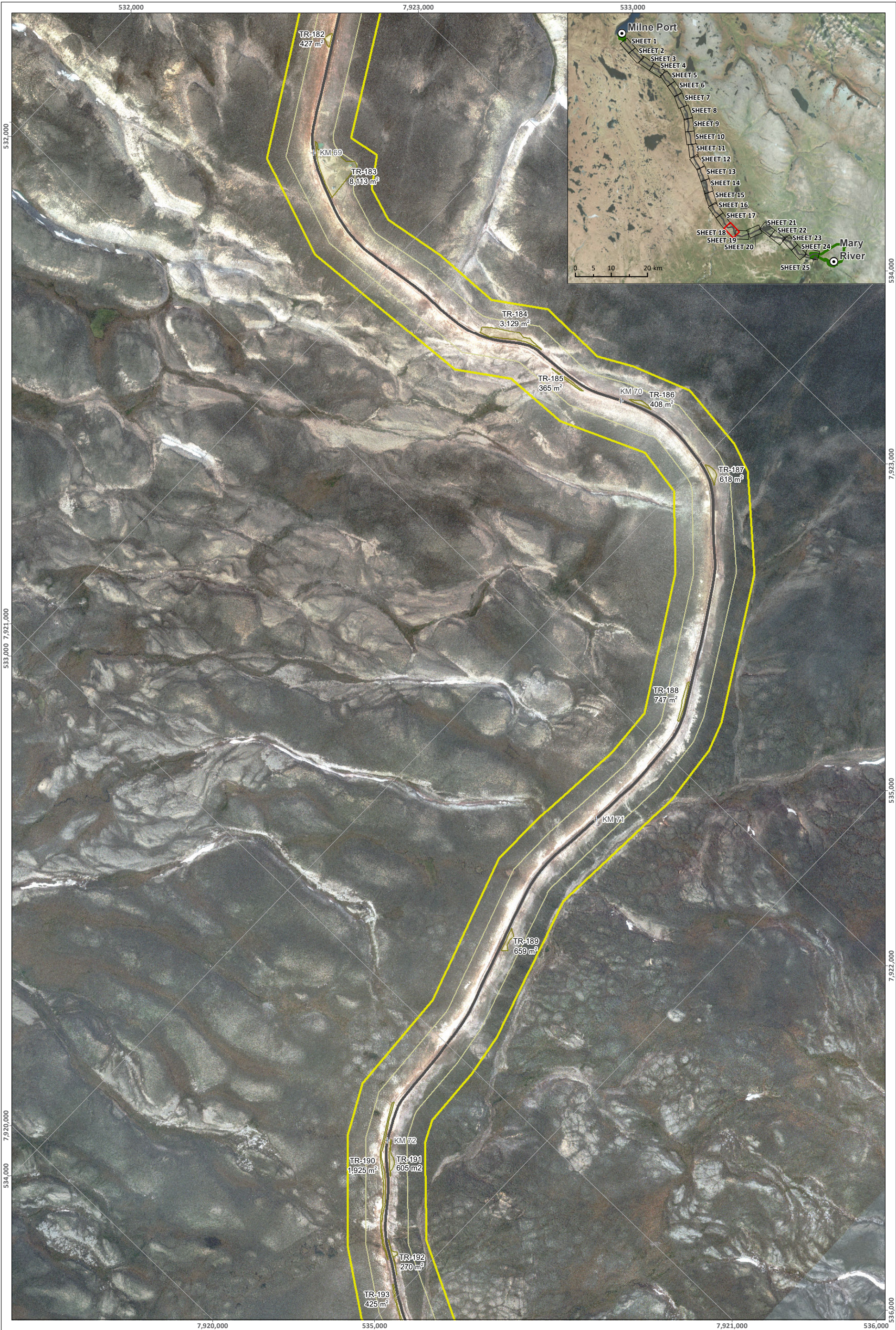
Projection: NAD 1983 UTM ZONE 17N.
Base Map: © 2023 Digital Globe, Inc.
Imagery and Infrastructure are representative
as of July 2023.

0 50 100 200 Meters
Scale 1:10,000



ᑭᓄᓂᑦ ᑯᓄᓂᑦ ᑯᓄᓂᑦ
FIGURE

1-25



LEGEND

- Milne Inlet Tote Road Km Marking
- Milne Inlet Tote Road
- Project Development Area
- Undisturbed 50 m Buffer From Commercial Lease Boundary
- Commercial Lease Boundary

Disturbance Type

- General Disturbed Area
- Historic Borrow Area KM 97

ᑭᓄᓂᓂ ᐃᑭᑦᑭᑦᑭᑦᑭᑦ MARY RIVER PROJECT

Tote Road 2023 Disturbance Area
(Sheet 18 of 25)

Projection: NAD 1983 UTM ZONE 17N.
Base Map: © 2023 Digital Globe, Inc.
Imagery and Infrastructure are representative
as of July 2023.

0 50 100 200 Meters
Scale 1:10,000



ᑭᓄᓂᓂ ᐃᑭᑦᑭᑦᑭᑦᑭᑦ
FIGURE

1-27



LEGEND

- ✕ Milne Inlet Tote Road Km Marking
- Milne Inlet Tote Road
- ▭ Project Development Area
- ▭ Undisturbed 50 m Buffer From Commercial Lease Boundary
- ▭ Commercial Lease Boundary

Disturbance Type

- ▭ General Disturbed Area
- ▭ Historic Borrow Area KM 97

ᑭᑭᑭᑭ ᑭᑭᑭᑭᑭᑭ

MARY RIVER PROJECT

Tote Road 2023 Disturbance Area
(Sheet 19 of 25)

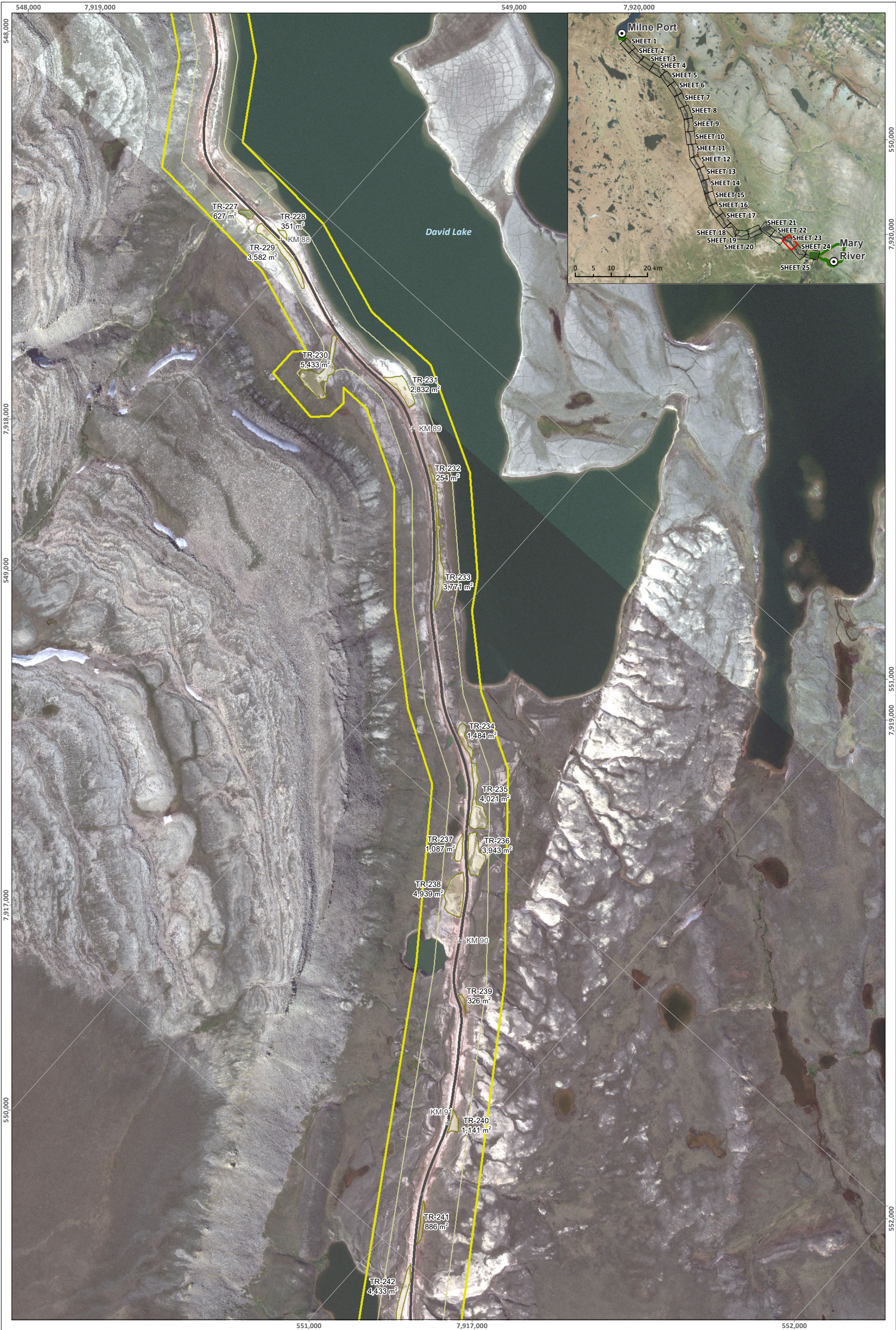
Projection: NAD 1983 UTM ZONE 17N.
Base Map: © 2023 Digital Globe, Inc.
Imagery and Infrastructure are representative
as of July 2023.

0 50 100 200 Meters
Scale 1:10,000



ᑭᑭᑭᑭᑭᑭ ᑭᑭᑭᑭ
FIGURE

1-28



LEGEND

- Milne Inlet Tote Road Km Marking
- Milne Inlet Tote Road
- Project Development Area
- Undisturbed 50 m Buffer From Commercial Lease Boundary
- Commercial Lease Boundary

Disturbance Type

- General Disturbed Area
- Historic Borrow Area KM 97

ᑭᓄᓂᓂ ᐃᑭᑦᑭᑦᑭᑦ

MARY RIVER PROJECT

Tote Road 2023 Disturbance Area
(Sheet 23 of 25)

Projection: NAD 1983 UTM ZONE 17N.
Base Map: © 2023 Digital Globe, Inc.
Imagery and Infrastructure are representative
as of July 2023.

0 50 100 200 Meters
Scale 1:10,000



ᑭᓄᓂᓂ ᐃᑭᑦᑭᑦᑭᑦ
FIGURE

1-32



LEGEND

- ×

 Milne Inlet Tote Road Km Marking
- Milne Inlet Tote Road
- Project Development Area
- Undisturbed 50 m Buffer From Commercial Lease Boundary
- Commercial Lease Boundary
- Disturbance Type

General Disturbed Area

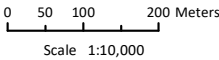
Historic Borrow Area KM 97

ᑭᓄᓂᑦ ᑯᓄᓂᑦ ᑯᓄᓂᑦ

MARY RIVER PROJECT

Tote Road 2023 Disturbance Area
(Sheet 24 of 25)

Projection: NAD 1983 UTM ZONE 17N.
Base Map: © 2023 Digital Globe, Inc.
Imagery and Infrastructure are representative
as of July 2023.



ᑭᓄᓂᑦ ᑯᓄᓂᑦ ᑯᓄᓂᑦ
FIGURE

1-33



LEGEND

- Milne Inlet Tote Road Km Marking
- Milne Inlet Tote Road
- Project Development Area
- Undisturbed 50 m Buffer From Commercial Lease Boundary
- Commercial Lease Boundary

Disturbance Type

- General Disturbed Area
- Historic Borrow Area KM 97

MARY RIVER PROJECT

Tote Road 2023 Disturbance Area
(Sheet 25 of 25)

Projection: NAD 1983 UTM ZONE 17N.
Base Map: © 2023 Digital Globe, Inc.
Imagery and Infrastructure are representative as of July 2023.

0 50 100 200 Meters
Scale 1:10,000

Baffinland

FIGURE 1-34